



Vortex Spas

## Titanium Spa Technical Information Pack



Dimensions: 300 x 230 x 90cm

---

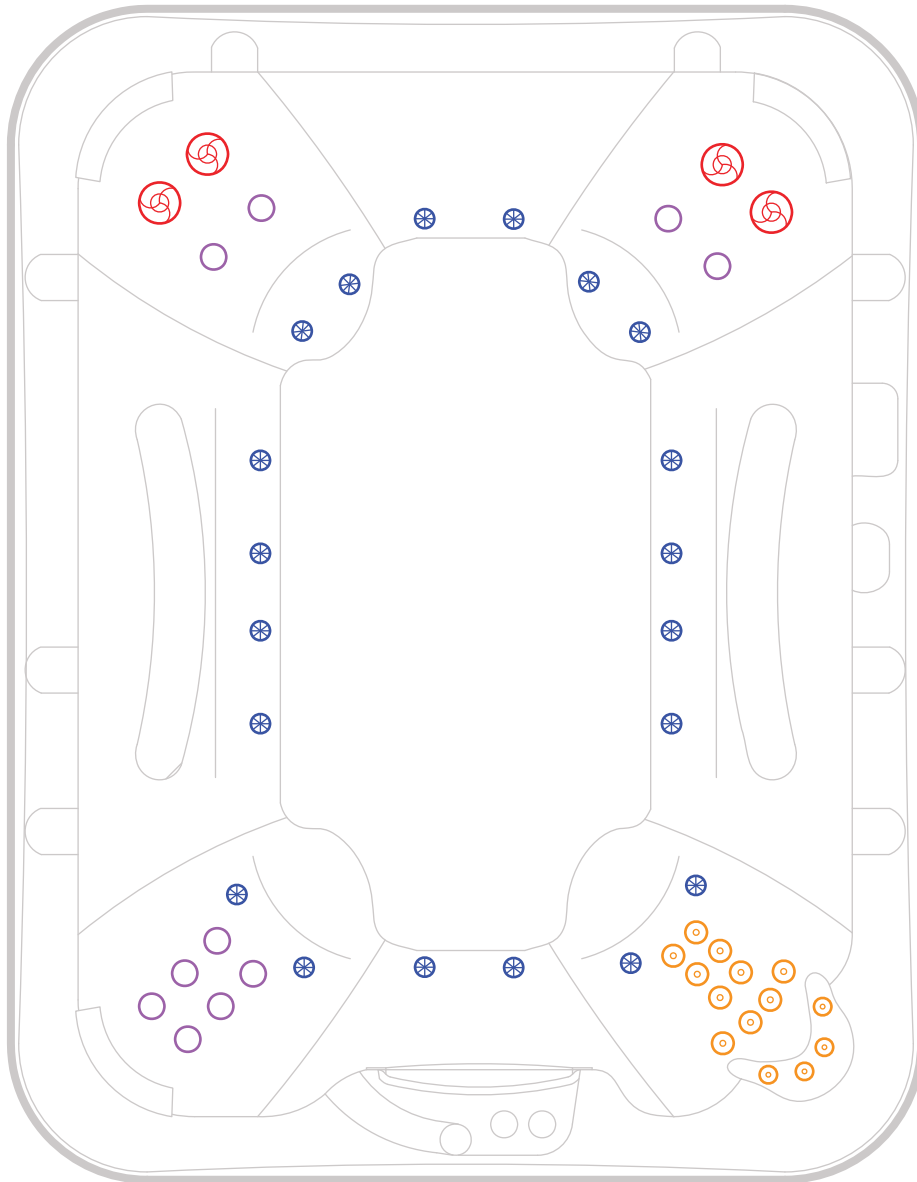
Our biggest selling large hydrotherapy spa.  
Comfortably seats up to 9 adults.

---



## Titanium Spa

Dimensions: 300 x 230 x 90cm



 4 x 127mm Single Spinning Jets

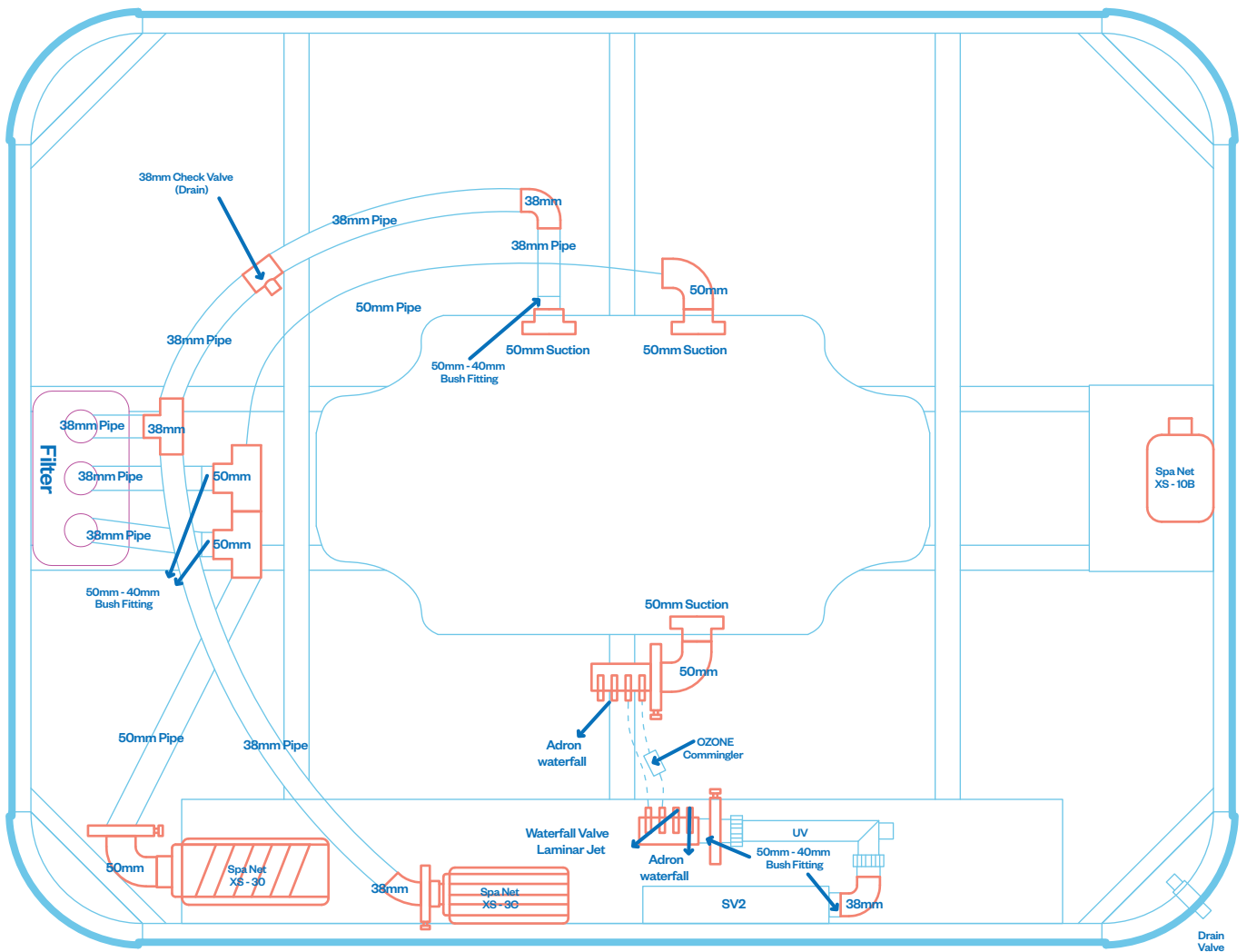
 10 x 75mm Directional Jets

 20 x 40mm Air Jets

 14 x 50mm Directional Jets

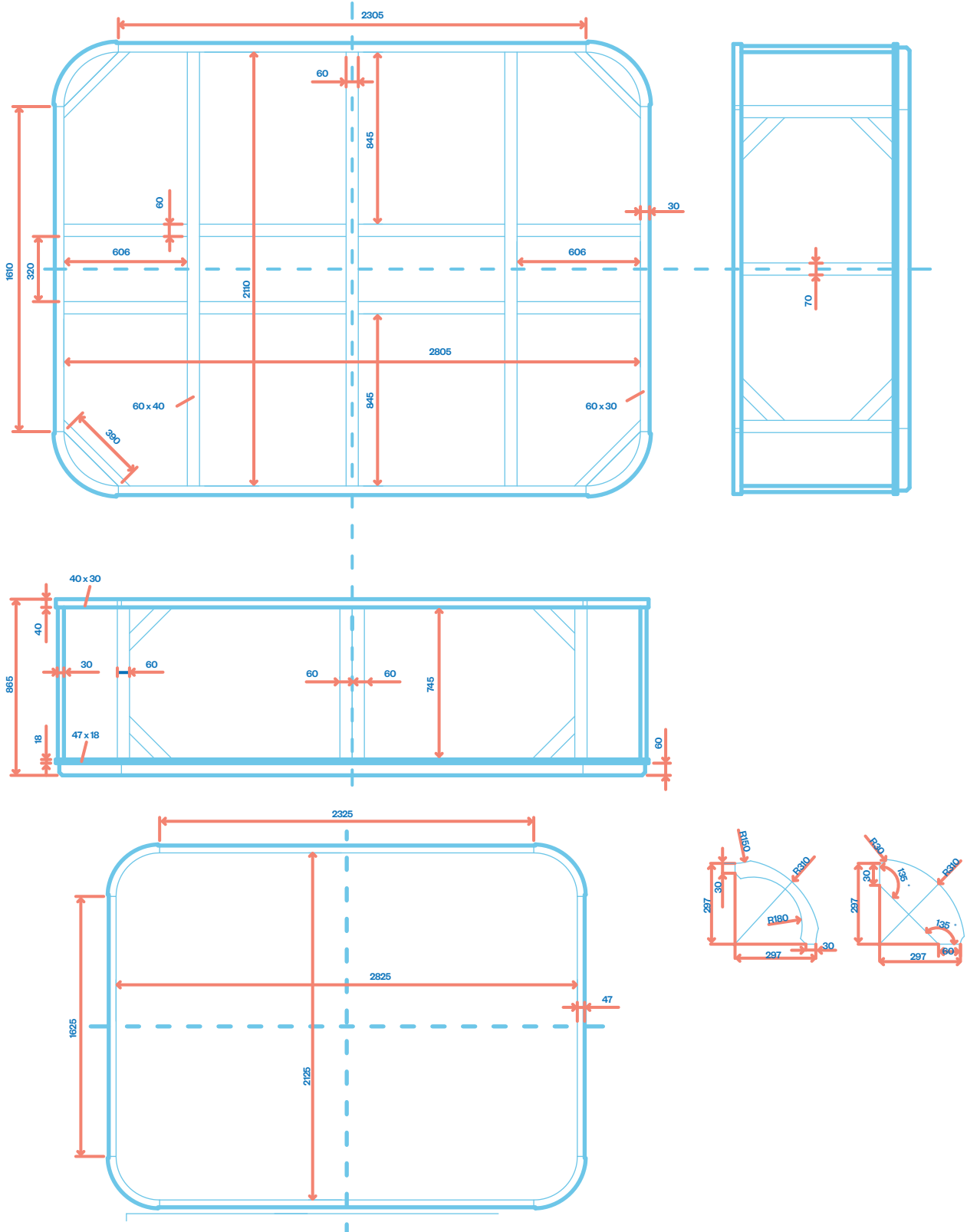


# Titanium Spa



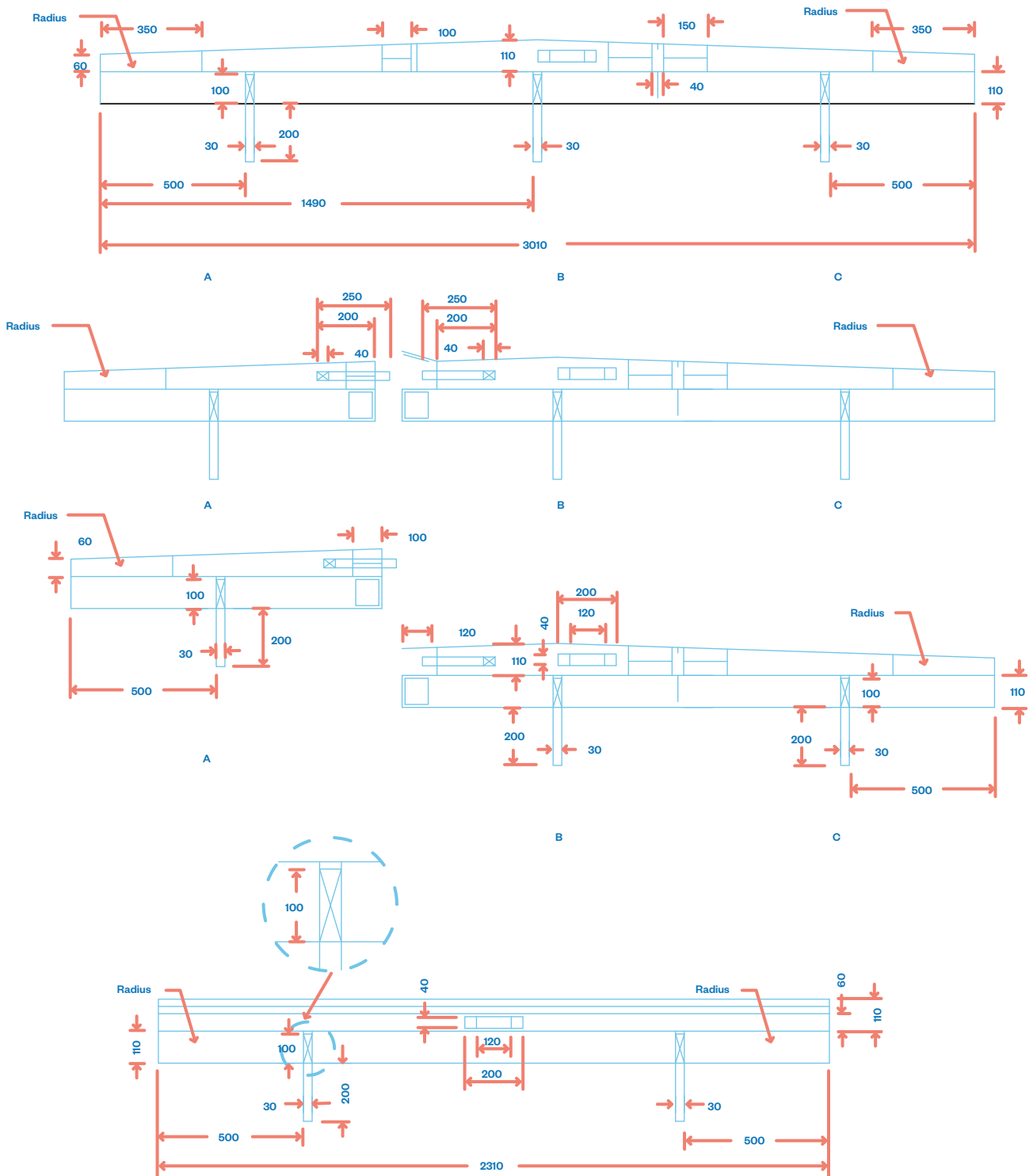


# Titanium Spa



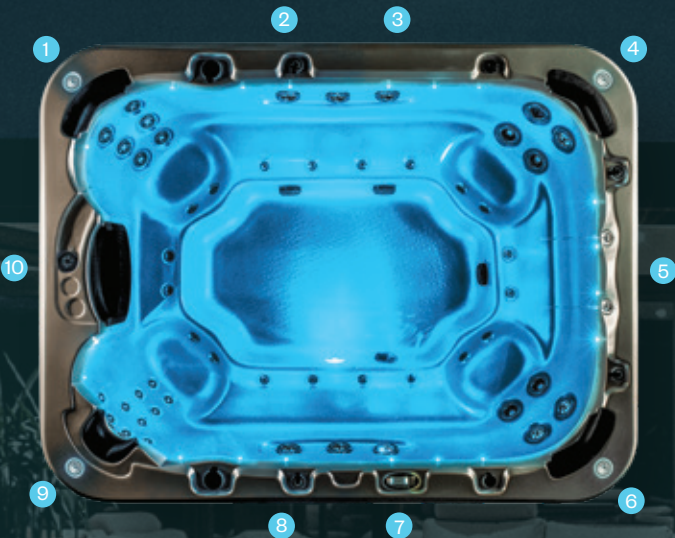


# Titanium Spa



# Titanium.

Hydrotherapy	★ ★ ★ ★ ★
Jets	48 / 54 (Hydroplus)
Volume	1990 litres
Seating	10 seats
Dimensions	3.0 x 2.3 x .90m high
Seat layout	



- |                              |                 |
|------------------------------|-----------------|
| 1. Back massage              | 2. Bench seat   |
| 3. Bench seat                | 4. Back massage |
| 5. Cool down                 | 6. Back massage |
| 7. Bench seat                | 8. Bench seat   |
| 9. Neck and shoulder massage | 10. Cool down   |



\* Conditions apply. Specifications may change without notice. May be pictured with some options included.

## Features

### Spa features

- LED backlit water cascade
- Spa health indicator
- Aromatherapy system
- Non-slip backlit drink holders
- Backlit laminar jets
- SmartSTREAM sound system\*

### Build

- Thermoclad maintenance free cabinet
- Superior USA made Aristech acrylic
- Thermobond 4 layer shell construction
- 12 shell/cabinet colour combinations
- Steel frame construction
- High impact moulded ABS base
- Duraflex 'no kink' PVC plumbing

### Water care

- Purezone micro filtration
- Purezone CD Ozone water clarifier
- Purezone UV sterilising system

### Lighting

- Programmable lighting
- Underwater LED floodlight
- Perimeter & cabinet lighting
- Hydroglow jet & topside control lighting

### Hydrotherapy

- Stainless steel jet casings
- Neck therapy collar
- Bench seats
- Individual seat pressure controls
- Hydroflow stainless steel spinning jets

### Control

- SpaNet premium control systems
- Smart phone app remote control\*
- SmartLINK WIFI connectivity\*

### Efficiency

- Intelligent thermal tuning
- High density lockable hardcover
- Perimeter insulation
- Dual layer insulation
- Hybrid heat pump\*
- Arctic pack insulation\*

\*optional

## Specifications

		HP
Dry weight	580kg	620kg
Filled weight (inc cover)	2594kg	2634kg
Lift weight	750kg	750kg
Intuitive spa controller	SV2	SV3
Programmable circulation pump	250W	250W
Jet pumps	3HP x 1	3HP x 2
Variable speed airblower	1000W	1000W
Variable output heater	3kW max	6kW max
Electrical requirements	15 amps max	32 amps max

## Warranties

Frame	Lifetime
Shell structure	10 years
Acrylic surface	5 years
Jets, plumbing & heater	5 years
Pumps & equipment	2 years